

Courtesy Of Norm Cholak Of RE/MAX River City

## \$578,800 - 10816 178 Avenue, Edmonton

MLS® #E4460428

**\$578,800**

4 Bedroom, 3.50 Bathroom, 2,385 sqft  
Single Family on 0.00 Acres

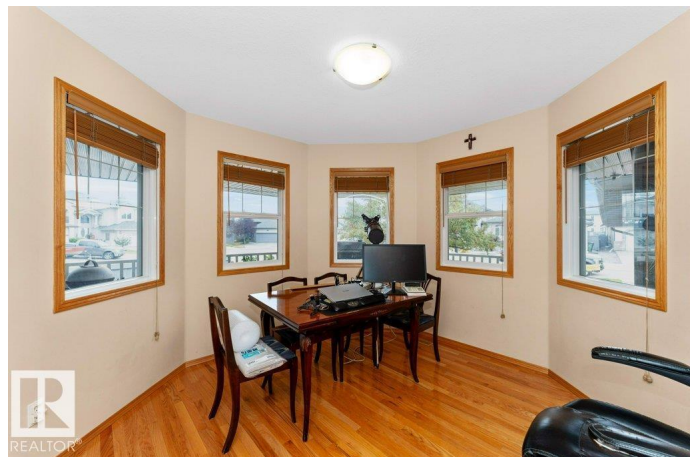
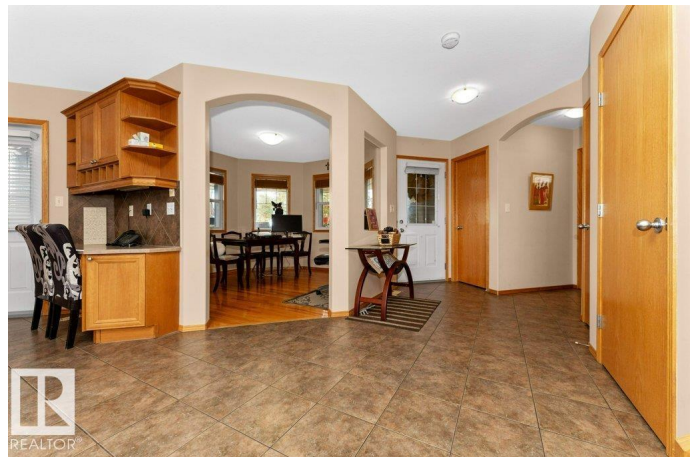
Chambery, Edmonton, AB

Stunning 2-storey Montorio built home in Chambery with a Separate Entrance, boasting a Double Attached Insulated Garage. This impressive residence features 3+1 bedrooms, 3.5 baths, and over 3350 sqft of total living space. The main floor offers an Open Concept layout with a spacious kitchen, Stainless Steel Appliances, Center Island, a cozy living room with a gas fireplace, built in cabinetry, 2 piece bath, and Main Floor Laundry. Upstairs, discover a refined office area, 2 bedrooms with a Jack And Jill bath, and a lavish Primary Suite with raised sitting area, plus a 5 piece Ensuite that includes a Corner Jacuzzi soaker tub . The basement includes a recreation room, additional bedroom, 3 piece bath, and Separate Entrance. Outside, enjoy the fully fenced yard with a large Composite Deck and fruit trees. Recent upgrades include fresh paint, furnace (2 years old), and hot water tank (4 months old). Exceptional location near walking trails, schools, shopping, public transportation and more!

Built in 2004

### Essential Information

MLS® #	E4460428
Price	\$578,800
Bedrooms	4



Bathrooms	3.50
Full Baths	3
Half Baths	1
Square Footage	2,385
Acres	0.00
Year Built	2004
Type	Single Family
Sub-Type	Detached Single Family
Style	2 Storey
Status	Active

### **Community Information**

Address	10816 178 Avenue
Area	Edmonton
Subdivision	Chambery
City	Edmonton
County	ALBERTA
Province	AB
Postal Code	T5X 6H6

### **Amenities**

Amenities	Deck
Parking	Double Garage Attached, Insulated

### **Interior**

Interior Features	ensuite bathroom
Appliances	Dishwasher-Built-In, Dryer, Fan-Ceiling, Garage Control, Garage Opener, Oven-Microwave, Refrigerator, Storage Shed, Stove-Electric, Washer, Window Coverings
Heating	Forced Air-1, Natural Gas
Fireplace	Yes
Fireplaces	Mantel, Tile Surround
Stories	3
Has Basement	Yes
Basement	Full, Finished

### **Exterior**

Exterior	Wood, Stone, Vinyl
Exterior Features	Fenced, Fruit Trees/Shrubs, Landscaped, Playground Nearby, Schools,

Shopping Nearby

Roof Asphalt Shingles  
Construction Wood, Stone, Vinyl  
Foundation Concrete Perimeter

### **School Information**

Elementary Baturyn School  
Middle Mary Butterworth School  
High Queen Elizabeth School

### **Additional Information**

Date Listed October 2nd, 2025  
Days on Market 31  
Zoning Zone 27

DATA IS DEEMED RELIABLE BUT IS NOT GUARANTEED ACCURATE BY THE REALTORS® ASSOCIATION OF EDMONTON. COPYRIGHT 2025 BY THE REALTORS® ASSOCIATION OF EDMONTON. ALL RIGHTS RESERVED. Trademarks are owned or controlled by the Canadian Real Estate Association (CREA) and identify real estate professionals who are members of CREA (REALTOR®, REALTORS®) and/or the quality of services they provide (MLS®, Multiple Listing Service®)

Listing information last updated on November 2nd, 2025 at 3:47pm MST